

# Emerald Hills Review

***Emerald Hills Homeowners Association Newsletter***  
***Layout and Design by Adriana Botto***

***October 4, 2010***



## 3rd Annual Association Sponsored Emerald Hills Community Picnic

**September 11, 2010 saw more than 220 Emerald Hills residents attending the third Annual Community Picnic sponsored by the Emerald Hills Homeowners Association.**

This family friendly event featured hamburgers, hot dogs, veggie burgers, potato salad, chips and cookies, all generously donated by Tim Harrison from the Canyon Inn. The hot food was all cooked by local realtor John Sieling. There was an assortment of games for kids and adults led by board member Tom Brouchoud. Board member Vicky Costantini's

husband, Oscar, led the salami toss game (if you hit the hanging salami with a potato, you got to take the salami home!). Making the rounds with a smile was Emerald Hills resident and Supervisorial candidate, Don Horsley. There was live music by "The Wildwood Brothers" featuring lead guitarist and singer, Peter Keller. At the end of the day, we held a raffle and picnic attendees had the chance to win prizes including a ladies' high-end designer fur coat, donated by Marline Underwood, and two tickets to a SF Giants vs. LA Dodgers baseball game, donated by Jim Donovan.

The EHHA Board would like to thank Joanne Marion and the

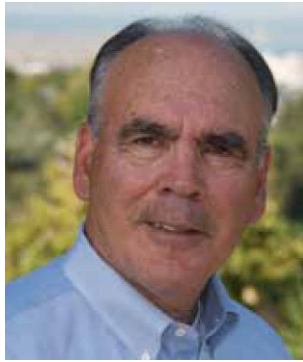
Emerald Hills Lodge & Golf Course/Redwood City Elks Lodge #1991 for allowing us to use their wonderful facilities for a third straight year. We are grateful to all of our volunteers and contributors including: Tim Harrison and the Canyon Inn, Donovan's Pest Control, Sancho's Taqueria, Canyon Cleaners, Peninsula Covenant Church and Community Center, Canyon Auto Service, The Perfect Rose Boutique, Emerald Hills Lodge & Golf Course / Redwood City Elks Lodge #1991, Momo the Clown, Marline Underwood, and Mary Bernierand. Everyone who participated was rewarded not only with the success of the event, but with the

opportunity to meet new neighbors, make new friends, and discover once again that **Emerald Hills is one of the best places to live in the Bay Area!**



## Decision in Emerald Hills – Election 2010

*The EHHA Board endorses the candidacy of Emerald Hills resident and neighbor, Don Horsley, as the person best qualified to represent the Emerald Hills community in the position of San Mateo County District 3 Supervisor.*





**Don Horsley**  
(former SMC Sherriff,  
Sequoia Health Care Dist.  
Board Member)



**April Vargas**  
(former Mid-Coast  
Commissioner)

### Position On Issues

<p><b>Design Review</b> <i>If elected Supervisor for our District, would you support removal of Emerald Hills from the list of Design Review districts in the County?</i></p> 	<p>I understand that many residents of Emerald Hills have indicated they would like to see the elimination of Design Review – or at the very least to have the County restudy the process to make it fairer and less costly for homeowners. I support having County staff working with the Emerald Hills Community and the Homeowners Association in reviewing the issue and recommending changes as needed.</p>	<p>It is the job of the Design Review committee to work with developers and architects as well as neighbors to assure that projects are constructed according to existing, community-approved standards. For the most part, the DR Committee on the mid-coast has been successful but not without constant efforts by all parties to ensure that projects comply with existing standards, neither overreaching nor falling short in the application of these principles. I am open to hearing from both sides on this issue.</p>
<p><b>Building Restrictions on Sloped Lots</b> <i>If elected Supervisor for our District, would you support enactment of blanket land use restrictions on sloped lots modeled on policies developed for the Coast?</i></p>	<p>No. Each area should be studied independently and land use restrictions engineered appropriately.</p>	<p>No, but creek impact and water quality must be taken into consideration as well as engineering safety.</p>
<p><b>Support of Local Schools</b> <i>How should the County help our local schools in this fiscal climate?</i></p> 	<p>I'd seek help from the County Office of Education and from the Sequoia Health Care District, where I voted for funding for school nurse programs this year. I would also support more private fundraising to partner with local schools.</p>	<p>I'd support a County partnership for cost sharing with local schools and lobbying Sacramento very hard to make education funding a #1 priority.</p>
<p><b>Traffic in Emerald Hills</b> <i>How would you deal with traffic issues in Emerald Hills?</i></p>	<p>Engineering is effective. I don't like speed bumps, but they work.</p>	<p>More tickets. More engineered, neighbor-supported devices, such as traffic circles and speed bumps.</p>

## 2010—A Successful Year!

Michael Mangini, EHHA President

As 2010 draws to a close, I have to look back and take some pride in the fact that the EHHA has successfully met its goals to improve community outreach and communication for the year.

We initiated and held the first ever *Meet the Candidates Night* where area residents could meet and pose questions to the Candidates who are running to become our representative as San Mateo County Supervisor in District 3.

We conducted the Third Annual **Emerald Hills Community Picnic**. This year's picnic exceeded the previous years, both in attendance and activities. As word of this fun event gets around, we will have high expectations that each succeeding years' event will only get better.

Our primary communication tools the *Emerald Hills Review* and our website continue to improve as demonstrated by ever-increasing community utilization.

All of these achievements would not have been possible without the dedication and hard work of your elected Board Members and the many volunteers who offer their time, effort, and contributions to make the Emerald Hills community a better place to live.

If you appreciate the work that the EHHA is doing, and value the special events and resources the Association brings to the community, then please consider volunteering to help in one of our many activities or contributing some extra dollars.

In this way, we can **all** take pride in this very special place.



EHHA President, Michael Mangini, presenting Emerald Hills neighbor and Canyon Inn owner, Tim Harrison, with an appreciation plaque.

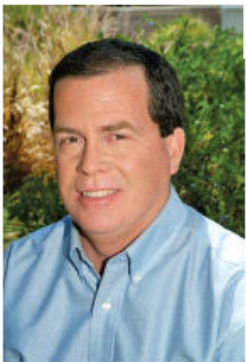
Early in the last century, San Franciscans summered on the Peninsula, many of them in the hills of Redwood City. At right is my father-in-law, just five years old, on the shore of Lower Emerald Lake in 1927. That kind of history lends character to an area. That character is what attracts people to live in and enjoy the Emerald Hills today.

If you are considering selling your home, please call me for a no obligation value analysis. Let's put my Emerald Hills knowledge and experience to work for you.

### Emerald Hills Community Picnic a Big Success!

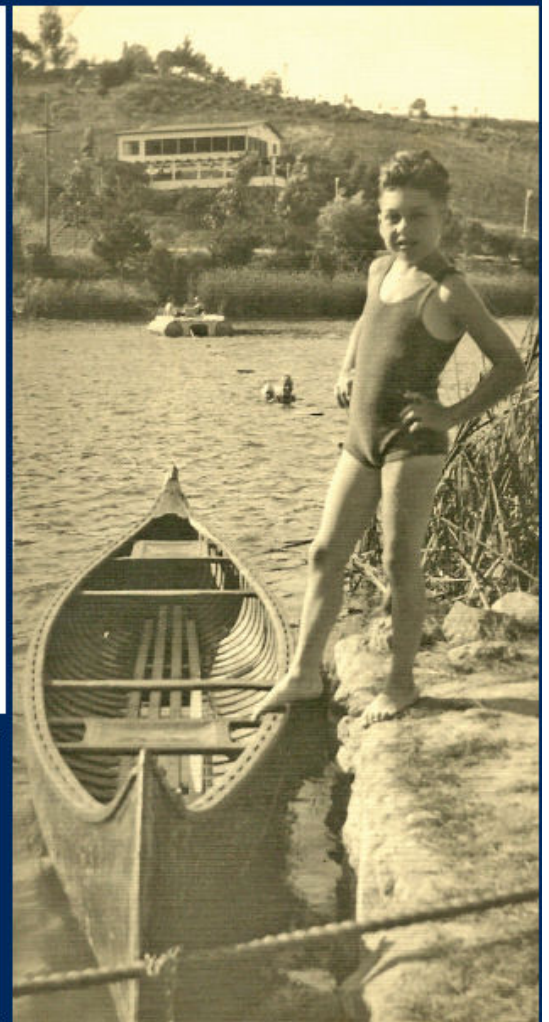
"Many thanks to Chef John Sieling for putting in yeoman service behind the grill."

Michael Mangini – President EHHA



**John Sieling**  
Broker Associate  
Phone: 650-610-6460  
Cell: 650-465-6355  
[john@johnsieling.com](mailto:john@johnsieling.com)  
[www.TheEmeraldHills.com](http://www.TheEmeraldHills.com)  
CA DRE #00898568

**Today**  
**Sotheby's**  
INTERNATIONAL REALTY  
EACH OFFICE INDEPENDENTLY  
OWNED AND OPERATED





## Project Update: Hetch Hetchy Water System Improvement Program

By Christina Kerby, Communications and Public Outreach  
(Photos taken by Yana Rudakov)

Construction of Bay Division Pipeline No. 5 Peninsula (BDPL5 Peninsula) is ongoing in Redwood City and Menlo Park. Mountain Cascade, Inc., has installed over a mile of pipe between Woodside Rd and Hillcrest Dr. In the past few months, pipe has been installed on Alameda, Brewster, Upland, Esther Lane, Oak Knoll, and Hillcrest. We are currently working on restoring the areas where pipe has been installed. Pipe installation for other areas in Emerald Hills, such as Bennett Rd and Edgewood Rd is scheduled for late Spring or early Summer of 2011. The crossing of Edgewood Road will likely take place over a long weekend, and traffic will be detoured to Cordilleras during construction.

Additionally, the Cordilleras Trail within the Pulgas Ridge Open Space area may be closed intermittently during construction. Detour signs will be posted in advance.

Keep in touch! Please check our project blog at [www.sfwater.org/PenPI](http://www.sfwater.org/PenPI) for weekly updates on construction progress and great pictures from the field. You may also contact the project team by phone at (800) 571-6610 or via email at [baydivision@sfwater.org](mailto:baydivision@sfwater.org). Thank you for your patience during construction!

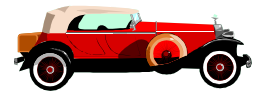


### When Does the EHHA Board Meet?

The EHHA Board typically holds its monthly meetings on the second Wednesday of each month in the conference room (lower level) of the new Woodside Fire Station 19 at Jefferson Avenue and Wilmington Way. Meetings are open to the community, and we invite you to attend. The meeting schedule is available on our web site [www.emeraldhills.org](http://www.emeraldhills.org).



MAURICE TANIOS  
Owner  
A.S.E. Certified Technician



## Canyon Auto Service Complete Auto Repairs

Phone: 650-364-5380 590 Canyon Rd  
Fax: 650-364-5790 Redwood City, CA 94062

### CANYON GAS & PROPANE

**10% off propane**

590 Canyon Rd Mike Nazemian  
Emerald Hills, CA 94062 (650) 369-2727

[CanyonGas@yahoo.com](mailto:CanyonGas@yahoo.com)

## San Mateo County "News and Notes"

By Liz Henton,  
Community Outreach Specialist  
County Manager's Office

### Preventing the Flu

The 2010-2011 flu season is here, and everyone ages 6 months and older should be vaccinated.

San Mateo County offers numerous resources for you to learn more about the flu and how to prevent its spread. The single best way to prevent seasonal flu is to get [vaccinated](#) each year, but good health habits like covering your cough and washing your hands often can help stop the spread of germs and prevent respiratory illnesses like the flu.



This year, you only need to get one shot to remain protected from a number of flu viruses, including H1N1. Talk with your doctor or visit your local pharmacy to get vaccinated. To learn more, you can also call the County flu hotline at (650) 573-3927 or visit [www.smhealth.org/flu](http://www.smhealth.org/flu).

Some people are at a higher risk for serious flu complications. This group includes young children, people ages 65 and older, pregnant women, and people with chronic conditions such as asthma, diabetes, and heart disease. Families and caregivers of these people should also get an annual flu shot to reduce their risk of getting the flu.

### News You Can Use

Because you live in an unincorporated neighborhood, the San Mateo County Department of Public Works provides you with a variety of services. Here are some of the most frequently asked questions (with some answers).



#### **Q: Where can I recycle electronics, hazardous waste, old appliances, or other items not accepted in curbside recycling?**

RecycleWorks, a program of San Mateo County, has a helpful online Recycling Center Locator Tool. Visit [www.recycleworks.org](http://www.recycleworks.org) and click on "Hazardous Waste."

Using the locator tool, you can find the closest drop off center based on the items you need to recycle.

#### **Q: Who do I call if a streetlight is out?**

If a streetlight in your neighborhood is not working, call the Lighting District office at (650) 599-1407. Give the

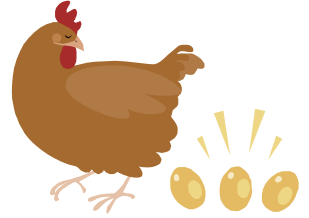
location and pole number by looking at the orange tag on the streetlight's poll. Lights are usually checked on Thursdays and repaired the same day if possible.

#### **Q: How do I report a clogged storm drain?**

To report a clogged or overflowing storm drain, call the Road Maintenance Office at (650) 363-4103. For a full list of frequently asked questions for the services provided to residents in unincorporated San Mateo county visit: <http://www.co.sanmateo.ca.us/publicworks>.

### Board says yes to chickens

On July 27, the Board of Supervisors voted to amend the San Mateo County zoning regulations to allow residents in the unincorporated areas to keep chickens or ducks in their yards.



The amended ordinances established:

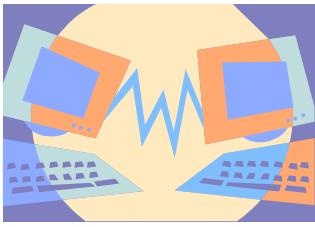
- Up to six chickens can be kept on parcels between 2,500 – 7,499 sq. feet
- Up to ten chickens can be kept on parcels larger than 7,500 sq. feet
- Poultry coops must be a minimum of 8 feet from adjacent neighbors' homes and a minimum of 23 feet from homes with abutting back yards.

Upon approval of the new ordinance, the Board requested that Planning staff return in six months with a status report, including complaints received.

### Skyline Boulevard Road Closure Information



The Department of Public Works will soon begin an improvement project on the Crystal Spring Dam Bridge on Skyline Boulevard near Highway 92. The project will coincide with San Francisco Public Utilities Commissions improvement to the Crystal Springs Dam as part of their Hetch Hetchy System improvement program. *(Continued on page 7)*



## Redwood City Community Invited to Join Their Online Neighborhood!

Malcolm Smith  
Public Communications  
Manager, Redwood City

Redwood City is excited to announce the start of a pilot program offering community members an online neighborhood-based social network. It's part of Redwood City's community building efforts to create many neighbor-to-neighbor connections throughout the City.

GoGoVerde is a Bay Area startup working with the City to provide a free, secure, easy-to-use geographic-based neighborhood networking site that builds community by helping neighbors connect with neighbors in a friendly, safe, active, and fun online environment. It's where Redwood City neighbors can meet daily, find recommended local businesses, share neighborhood information, ask and answer questions of each other, get updated on City and community issues, post events and activities, and more. It is true "neighbor to neighbor" networking.

It's easy and free to participate: community members can just go to [www.gogoverde.com](http://www.gogoverde.com), enter their zip code and select their neighborhood, enter their email address and a password, and click join. At that point, participants are a member of this new network that is just for their neighborhood.

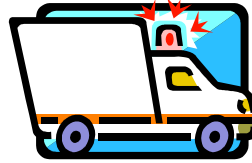
Right now, Redwood City and GoGoVerde have set up sites for all eleven official Redwood City neighborhood associations, and some of them already have over 100 online members. As more and more people join in, smaller neighborhood areas can be defined so that neighbors are interacting with their closer neighbors. Identified areas can be just a few houses or streets, or many blocks, or could be built around common interests for a neighborhood, such as disaster preparedness, neighborhood watch, or a gardening club.

*"This new neighborhood network helps foster connections between Redwood City community members," said Mayor Jeff Ira. "It provides an online space for neighbors to introduce themselves, offer recommendations, announce events, find volunteer opportunities, or simply talk about what's going on in their neighborhood."*

Community members have already reported successfully using the site and getting to know their neighbors: one neighbor borrowed a chainsaw, then offered free wood; another asked for recommendations for a quality contractor; some neighbors spread the word about the County's free whooping cough vaccine clinic, and public safety tips; several announced school events, and

organized and publicized block parties; and there are many more examples.

This is a great community building opportunity for all Redwood City community members. Become part of the neighbor-to-neighbor network! For more information, please visit [www.gogoverde.com](http://www.gogoverde.com).



## Emergency

### Redwood City has implemented the **CodeRED** Emergency Notification System

**CodeRED** Emergency Notification System is an ultra high-speed telephone communication service for emergency notifications. **CodeRED** allows Redwood City to telephone targeted areas or the entire City in the case of an emergency situation, and deliver a pre-recorded message (bilingual when appropriate).

You can have the system include your cell phone, work phone (even if out of the area), or other alternate number, so you are sure to be called when a **CodeRED** alert is activated in the area of your home or business.

During a **CodeRED** alert, both the primary and alternate number will be called. This service is available to all Redwood City addresses, as well as those outside the City limits in the North Fair Oaks, Emerald Hills, or other unincorporated areas directly adjacent to Redwood City.

The system is capable of dialing up to 60,000 phone numbers per hour. It then delivers our recorded message to a live person or an answering machine, making three attempts to connect to any number.

***This system will ONLY be used in the event of an emergency requiring immediate notification.***

Examples of times when the **CodeRED** system could be utilized:

- Earthquake
- Fires or floods
- Chemical spill or gas leak
- Drinking water contamination
- Severe utility outage
- Evacuation
- Missing person
- Bomb threat
- Bio-terrorism threat
- Hostage situation

Visit <http://www.coderedweb.com/> for more information on how the **CodeRED** system works, or **to get started with updating your information, or adding an alternate phone number**, please visit Redwood City's website at [http://www.redwoodcity.org/fire/disaster/code\\_red.html](http://www.redwoodcity.org/fire/disaster/code_red.html).



## Thanks for Your Continued Support

A Message From EHHA Treasurer, Tim Farrar

At the beginning of September 2010, the Association had \$4,832 in the bank. Donations to date in 2010 have totaled \$2,605 from 57 residents and we have also received a total of \$3,625 in advertising for the three newsletters published so far this year. Newsletter printing and postage to date has cost \$4,529 so the advertising receipts are now close to covering the costs of the printed newsletter, despite recent increases in printing costs caused by changes in postal regulations. This is very welcome news, allowing us to focus our donation-based expenditure on the community picnic and rebuild the Association's reserves slightly,


which had fallen to a dangerously low level in the first half of last year. To date, other expenditure (related mainly to the annual meeting and this year's picnic) has totaled \$886, leaving the Association with a surplus of \$875 as of writing in early September (before taking into account the costs of the picnic and for printing and mailing this newsletter).

We hope that you enjoy reading the newsletter. Please do let advertisers know if you see their ad here so that they know it's money well spent. We are proud to be building a good reputation as a cost-effective option for local advertisers. Equally, if you're a local business owner, please consider advertising in the newsletter, as it is widely read in the community and much more cost effective than a standalone mailing.

Enclosed with this newsletter you will find a donation envelope, which you may use to send contributions, with checks payable to the EHHA. If you receive the newsletter electronically, then you may send donations to us by mail at EHHA, Attn: Treasurer, PO Box 620449, Woodside, CA 94062, or you may donate via PayPal at <http://emeraldhills.synthasite.com/donate.php>.

And for supporters who donate \$100 or more to the Association, the EHHA will give you a high-quality polo shirt or cap embroidered with the Emerald Hills logo. (If you would like a polo shirt or a cap, please include a note with your donation indicating your choice of thank-you gift and preferred shirt size, if applicable, with each donation of \$100 or more.) Thank you!






### Emerald Hills Real Estate Expert

*"Live Here, Love it Here"*

*There is nothing quite like a sunny day in Emerald Hills. Walk beneath the oaks, go down for a swim at the lake or eat and shop at our quaint stores. Enjoy long nature hikes at beautiful Edgewood Park and become part of our community, because if you lived here you would know why it is such a friendly place to call home.*



**Vicky Costantini**  
650.430.8425  
[vcostantini@apr.com](mailto:vcostantini@apr.com)  
[vickycostantini.com](http://vickycostantini.com)

**WOODSIDE | 2930 Woodside Road 650.529.1111**

("News and Notes" continued from page 5) Skyline Boulevard is expected to be closed between October 2010 and the summer of 2013. During the construction period, drivers and cyclists will be diverted around the bridge construction site with posted detour routes.

Sawyer Camp Trail, will remain open during the construction period. However, be aware that parking will be more limited as Vista Parking lot will be closed starting this October.

### SMCNews

For more updates on County news, check out SMCNews a blog for residents in the unincorporated areas: <http://smcnews.wordpress.com>



For more information about SMCNews, contact Liz Henton at [lhenton@co.sanmateo.ca.us](mailto:lhenton@co.sanmateo.ca.us) or call (650) 363-1949.

### Do You Have a Question about San Mateo County Government?



Please contact Deputy County Manager **Peggy Jensen** at [pjensen@co.sanmateo.ca.us](mailto:pjensen@co.sanmateo.ca.us) or (650) 363-4598 or Public Communications Manager **Marshall Wilson** at [mwilson@co.sanmateo.ca.us](mailto:mwilson@co.sanmateo.ca.us) or (650) 363-4153.

**Yes! I want to contribute...**

- ☐ I would like to contribute \$35.  
☐ I can spare a bit more. Here is my donation for \$50.  
☐ Here is my contribution for \$100.  
I would like a cap ☐ *or* a polo shirt ☐.  
My shirt size is ☐ Ladies' ☐ Men's  
☐ SM ☐ MED ☐ L ☐ XL  
☐ I am a resident of one of the most desirable neighborhoods on the Peninsula, and I want to keep it that way! Here is my contribution of \$\_\_\_\_\_.

- ☐ My check is enclosed.

If you would like to donate via credit card, please visit

<http://emeraldhills.synthasite.com/donate.php>

*Your personal information is kept confidential.*

\_\_\_\_\_  
Name

\_\_\_\_\_  
Street Address

\_\_\_\_\_  
Emerald Hills, CA 94062

\_\_\_\_\_  
City, State Zip

\_\_\_\_\_  
Phone # (optional)

\_\_\_\_\_  
E-mail Address (optional, but requested)

- ☐ Please send the email newsletter instead of print, to help preserve the environment *and* save the Association money.  
☐ Please send me both the print and email newsletter.

You can make donations online at

<http://emeraldhills.synthasite.com/donate.php>

or you can mail your contributions to:

**EHHA, PO Box 620449, Woodside, CA 94062**

*Please note that donations to the EHHA are not tax deductible.*

**Contact the Board of Directors**

Tom Brouchoud <sup>1</sup> (Vice President).....	366-7890
Vicky Costantini <sup>1</sup> .....	430-8425
Tim Farrar <sup>2</sup> (Treasurer) .....	642-5195
Michael Mangini <sup>2</sup> (President).....	365-4449
John Raleigh <sup>2</sup> .....	743-4111
Jay Roses <sup>2</sup> (Corr. Secretary).....	766-7425
Mike Sherman <sup>1</sup> (Webmaster/Database Mgr.).....	544-0896
Carl Touhey <sup>2</sup> (Community Picnic) .....	368-2216
Marline Underwood <sup>1</sup> .....	224-1214

<sup>1</sup> Term expires at the 2012 Annual Meeting of Members

<sup>2</sup> Term expires at the 2011 Annual Meeting of Members

**DONOVAN'S**  
**PEST CONTROL, INC.**

*"We don't have to be the biggest to be the best."*

**RESIDENTIAL • COMMERCIAL**

**Insect, Rodent & Bird Control**

**Landscape & Structural Pest Control**

- **Non-Chemical Solutions**
- **Integrated Pest Management Solutions**
- **Attic & Sub Clean Outs**  
(Removal of Fecal Matter from Unwanted Pests)
- **Structure Sealing to Prevent Rodent Access**

**SAME DAY SERVICE**

[www.controlpests.com](http://www.controlpests.com)

**650-365-1900**

**888-665-1901 toll free**

**VISA/MC/AMEX/DISCOVER**



**Builder and Neighbor Since 1959**



It all started fifty years ago with a commitment to solid craftsmanship and a drive to perform the job better than anyone else.

So, if you are planning a new home, a simple or complex remodel, green building, a kitchen or a bath, Springs Construction is ready to help you expedite your building process. Whether you simply have an idea, or have plans ready for building, call us at (650) 298-9300. We are here to help.



**WALTER M. SPRINGS**

**CONSTRUCTION**

881 Hurlingame Ave. RWC  
94063

[www.springsconstruction.com](http://www.springsconstruction.com)

Lic # 232003